

OPEN TYPE HOSE REEL

MEDIUM PRESSURE

2000 PSI (138 bar) MAX. WORKING PRESSURE

**IMPORTANT: READ THIS MANUAL CAREFULLY BEFORE INSTALLING,
OPERATING OR SERVICING THIS EQUIPMENT.**

614027

Includes Roller Bracket and Reel Stop Asm.

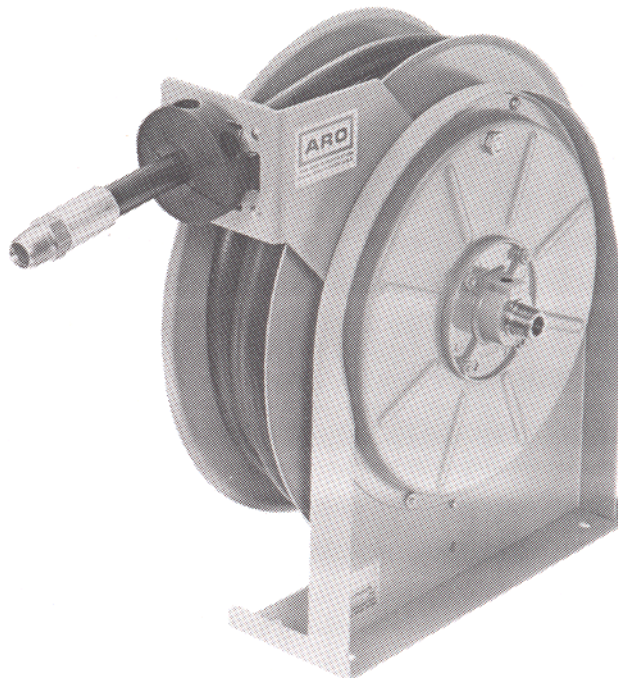
SPECIFICATIONS

Material Inlet size	1/2"NPT-Male
Hose Connection (Outlet) Size	1/2"NPT-Male
Hose Receiver Hub Dia.	6"(152 mm)
Hose Receiver O.D. Dia.	13-3/4"(349 mm)
Hose Receiver Width	3"(76 mm)
Overall Height	14-1/2"(368 mm)
Swivel Pressure Max. Cap	2000 PSI (138 bar)
Capacity (Hose)	1/2"ID 1 Wire Braid Hose

GENERAL DESCRIPTION

The ARO® 614027 Hose Reel is designed for use with air, water, petroleum products and other service fluids. It is primarily used in vehicle service and maintenance applications. The Reel has a maximum hose capacity of 25 feet of 1/2" inside diameter hose. It may be mounted on the floor, ceiling, or sidewall. It is furnished with a stop dog for automatic latching.

The arm may be indexed in increments of 45° to facilitate positioning, see page 4 for dimensional data.



OPERATING AND SAFETY PRECAUTIONS

DO NOT EXCEED MAXIMUM WORKING PRESSURE

- HEED ALL WARNINGS.
- Use ARO replacement parts to assure compatible pressure rating.
- **WARNING: SYSTEM PRESSURE LIMITS.** System pressure should never exceed the maximum working pressure of any component or accessory used in the system.

- **WARNING: INJECTION HAZARD.** NEVER ALLOW PRESSURIZED MATERIAL, FLUIDS, OR AIR TO BE DIRECTED TOWARDS THE SKIN.
- **WARNING: SPRING UNDER TENSION.** Be extremely careful when working on a reel when the spring is under tension, be certain to take all precautions necessary to insure safety.

INSTALLATION AND OPERATING INSTRUCTIONS

INSTALLATION

The hose reel is equipped with a universal mounting bracket so that it can be mounted on the floor, wall or ceiling; whichever is convenient. The hose guide arm can be moved to the position desired by removing the screws fastening the guide arm to the reel base. Shift the guide arm bracket so the hose comes off the reel at the desired position and replace the screws.

OPERATING INSTRUCTIONS

- When pulling hose from reel, pull on hose itself, not on control handle or swivel.
- When hose is withdrawn from reel as far as possible, do not continue to pull or jerk in order to gain an extra inch.
- To catch hose in extended position, pull out to desired length and then let retract slowly until it catches.
- To retract hose back on to the reel, let it go back rapidly until only a few feet remain out, then slow it down. Do not permit hose to bang back onto the reel.

SERVICE INSTRUCTIONS

WARNING: REEL SPRING IS UNDER TENSION, AN UNLEASHED SPRING CAN BE DANGEROUS. SERVICE MUST ONLY BE DONE BY A TRAINED, QUALIFIED SERVICE PERSON.

Extensive repairs should only be performed by authorized service personnel or factory to avoid possible injury or damage which may void the warranty. REMOVE ALL SPRING TENSION BEFORE BEGINNING DIS-ASSEMBLY PROCESS.

ADJUSTING TENSION ON HOSE

To increase tension:

- ___ Pull wraps of hose out of reel.
- ___ Engage stop dog in position.
- ___ Put wraps back on reel with reel in stationary position until desired tension is obtained.

To relieve tension:

- ___ Engage stop dog in position.
- ___ Remove wraps of hose with reel in stationary position until desired tension is obtained.
- ___ Adjust hose stop to desired length.

HOSE REPLACEMENT

CAUTION: RELIEVE ALL PRESSURE FROM SYSTEM

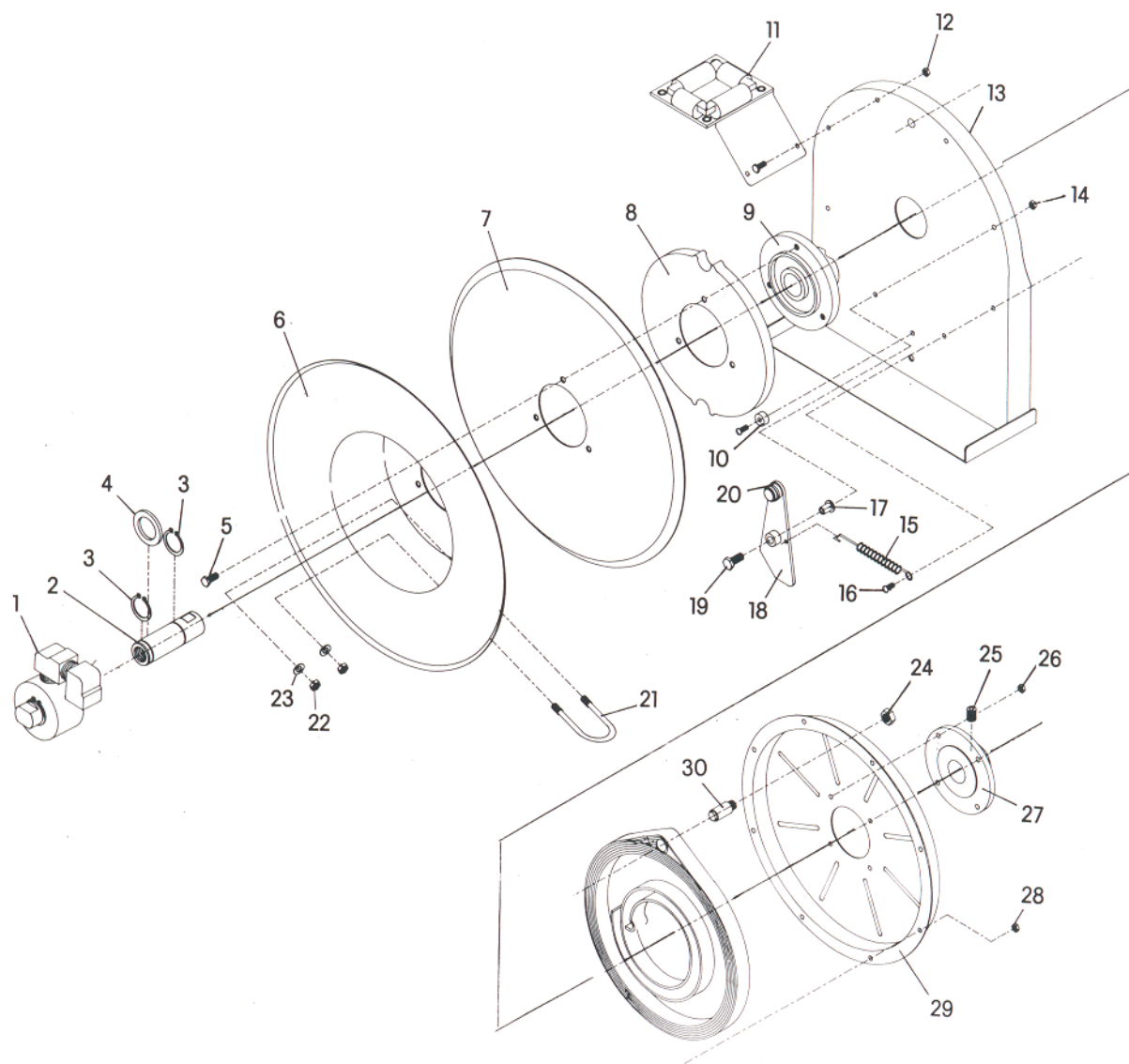
- ___ Wind spool flange clockwise—facing swivel—until spring is tight.
- ___ Back off three turns and latch.
- ___ Insert hose through roller guide and hole in spool flange.
- ___ Connect hose fitting to swivel joint and secure hose with clamps.

NOTE: Use Teflon tape on the threads upon assembly.

CAUTION: Tighten hose clamp securely so the pull is on the hose clamp and not on the swivel nut. DO NOT tighten so tightly that the hose I.D. is collapsed.

LUBRICATION

Hose reel springs and bearings are packed with grease and require no further lubrication.



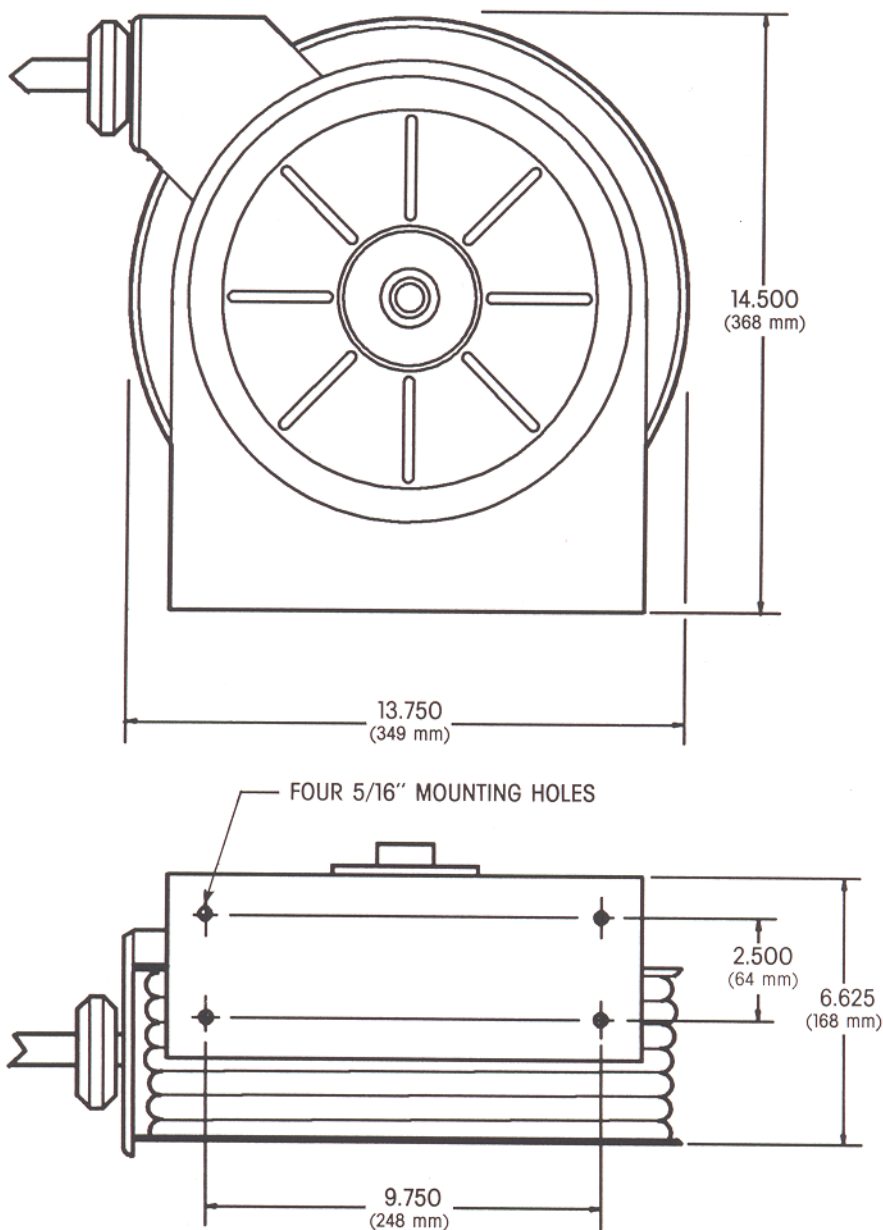
PARTS LIST

REF.	DESCRIPTION	(QTY)	PART NO.
1	Swivel & Ell Asm.	(1)	62045-2
2	Main Shaft	(1)	
3	Snap Ring	(1)	
4	Spacing Washer	(1)	
5	Hex Screw	(3)	
6	Flange Sheave	(1)	
7	Sheave Disc	(1)	
8	Latch Cam	(1)	
9	Spring Arbor	(1)	
10	Screw	(2)	
11	Roller Bracket Asm.	(1)	
12	Nut	(2)	
13	Frame	(1)	
14	Nut	(1)	
15	Latch Spring	(1)	62045-1
16	Screw	(1)	

REF.	DESCRIPTION	(QTY)	PART NO.
17	Nut	(1)	
18	Latch Plate	(1)	
19	Bolt	(1)	
20	"O" Ring	(1)	
21	"U" Bolt	(1)	
22	Nut	(1)	
23	Washer	(1)	
24	Nut	(1)	
25	Set Screw	(1)	
26	Nut	(1)	
27	Hub Casting	(1)	
28	Nut	(1)	
29	Spring Case Asm.	(1)	
30	Spring Case Stud	(1)	
	Hose Asm.(Not Shown)	(1)	623501-25
	Hose Bumper(Not Shown)	(1)	5668

DIMENSIONAL DATA

ALL DIMENSIONS IN INCHES & (mm)



Part of worldwide Ingersoll-Rand